

St Mary's Centre



Sexual Assault Referral Centre



The Faculty of Forensic & Legal Medicine
of the Royal College of Physicians

Raising standards in forensic and legal medicine; protecting vulnerable people



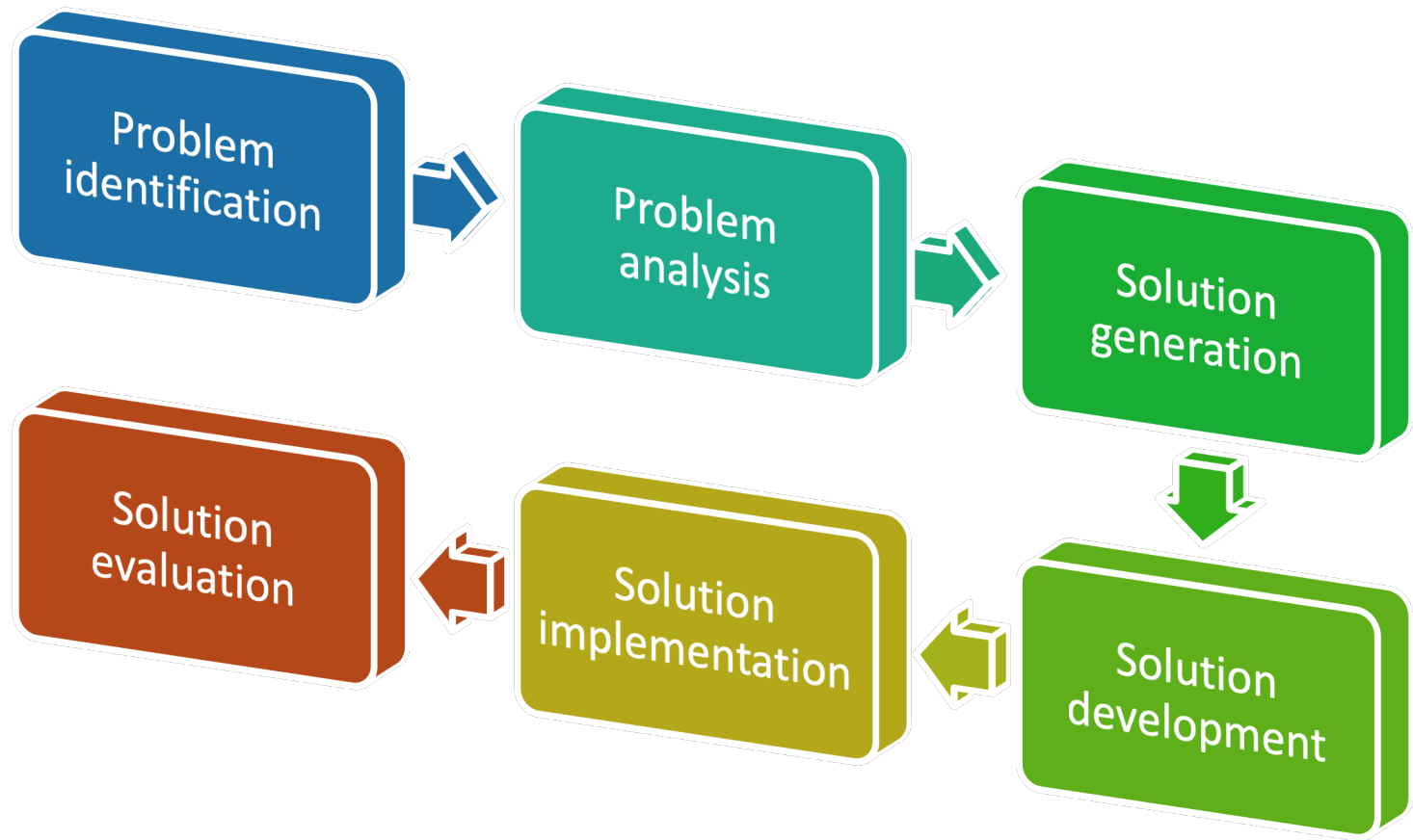
Institute For
Addressing
Strangulation

Sexual violence, multidisciplinary approach and the link to minors.

Professor Catherine White

September 2024

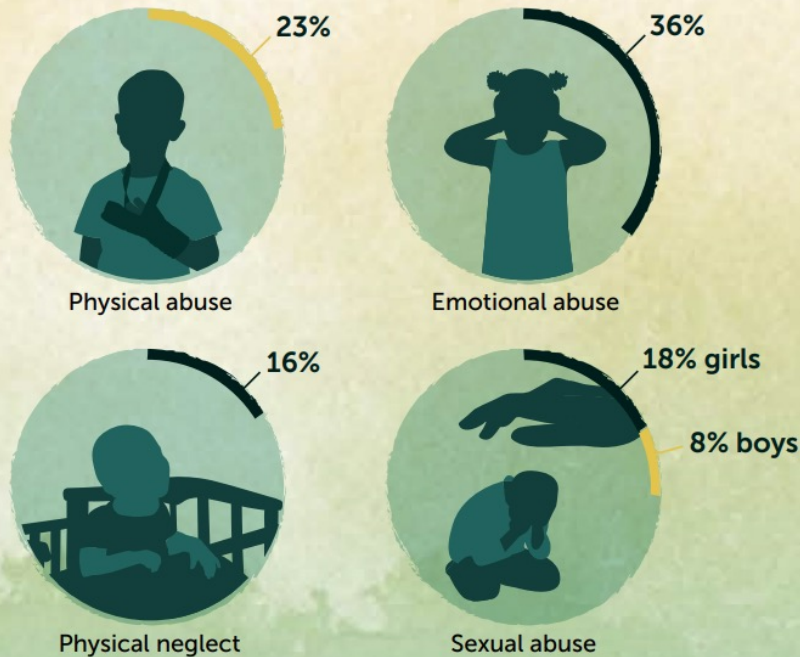
Problem solving process



Prevalence

Child maltreatment is widespread.

Worldwide children report that they suffered some form of violence in the past year:



World Health Authority

https://cdn.who.int/media/docs/default-source/documents/child-maltreatment/child-maltreatment-infographic-en.pdf?sfvrsn=7d798249_2

Girls 18%

Boys 8%

Keir Starmer promises to halve crime against women

© 23 March 2023



The Labour leader sets out his plan to cut crime levels and restore confidence in the police.

UK's most dangerous domestic abusers will be monitored like terrorists under government plans to crack down on violence against women and girls

- Police will use counter-terror-style tactics to bring offenders to justice
- Labour has warned the current response does not look at a pattern of behaviour
- Party has a mission to halve cases of this type of violence within the next decade

By [HARRIET LINE, DEPUTY POLITICAL EDITOR](#)

PUBLISHED: 23:06, 18 August 2024 | UPDATED: 23:38, 18 August 2024



© Dave Warren/LNP/Shutterstock

Safeguarding minister Jess Phillips (pictured) will embark on a six-month data-gathering exercise to assess the scale of the violence against women problem

Organisational Silos

Group 1



Group 2



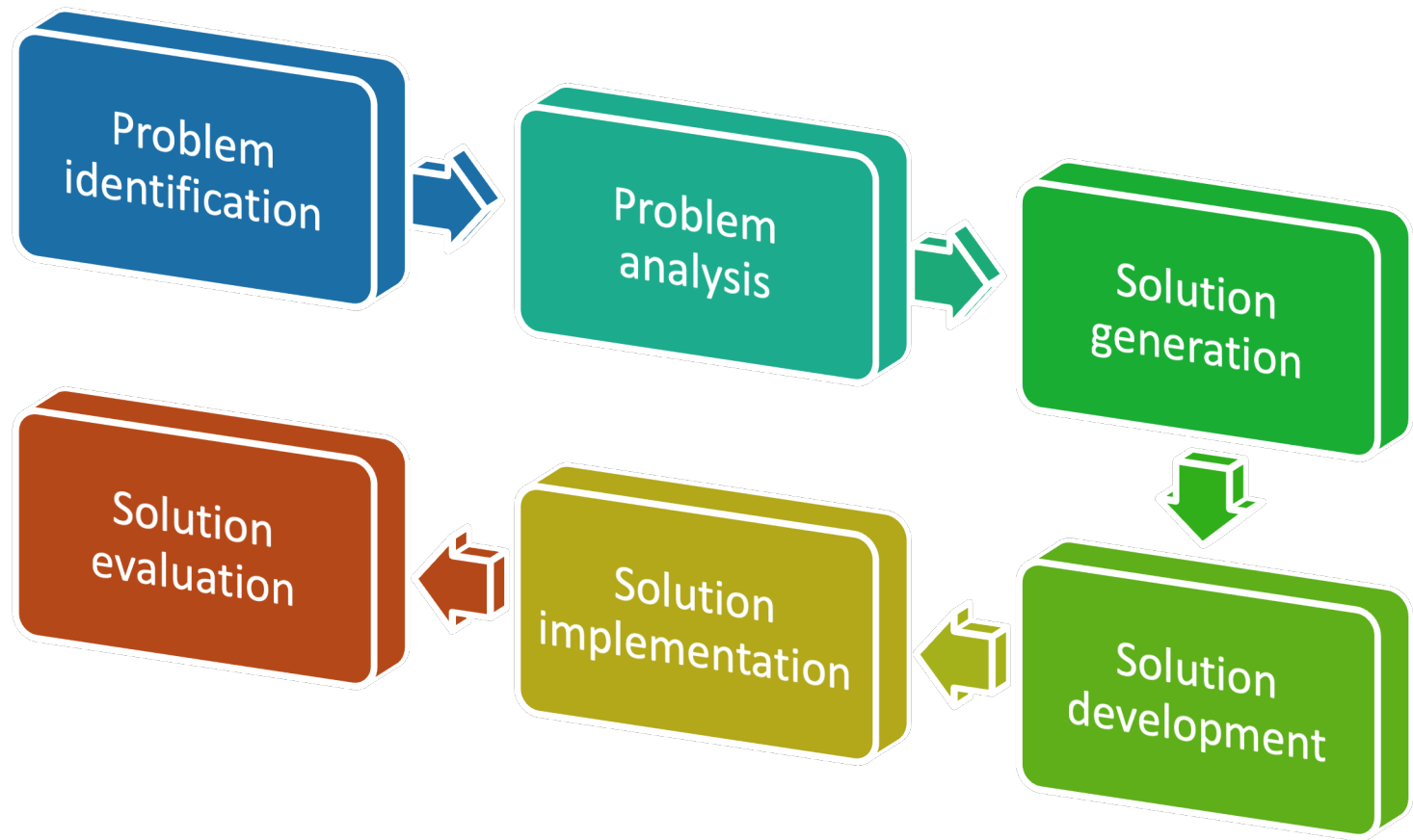
Group 3



Group 4



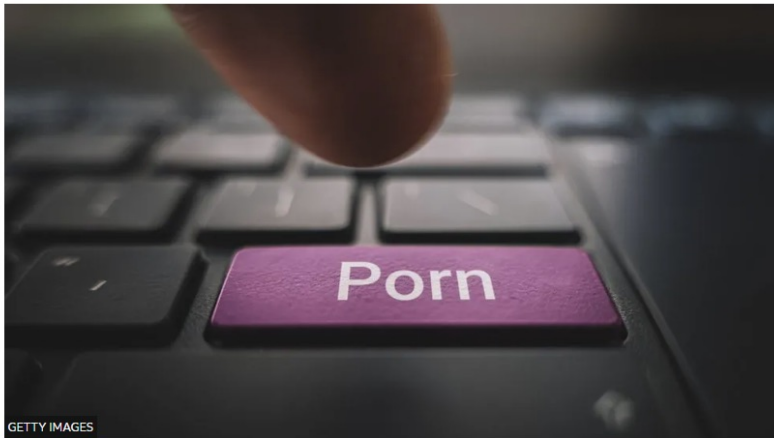
Problem solving process



Root causes?

Pornography review to canvass public's view on issue

11 January



GETTY IMAGES

By Chris Vallance

Technology reporter

The public, adult performers and law enforcement are being invited to answer a questionnaire on the impact of pornography.

Where should multidisciplinary / multiagency work focus?

- Prevention
- Prevalence
- Presentation
- Engagement
- Outcomes
 - Health
 - Criminal Justice
 - Society





Obstacles to
access

Who don't we
see?

Abuse tends to hunt in packs

- Physical
- Sexual
- Neglect
- Emotional



Police & IDVA joint visits



Avon and Somerset Police
SERVE. PROTECT. RESPECT.

You are here: [Home](#) » [News](#) » Operation providing enhanced support for Domestic Abuse victims sees improvement in

Operation providing enhanced support for Domestic Abuse victims sees improvement in police engagement

Posted on 17 July 2024, at 08:14 in [Campaigns](#)



R v Sinaga

<https://www.bbc.co.uk/news/uk-england-manchester-56933294>



Operation Soteria

<https://www.gov.uk/government/publications/operation-soteria-year-one-report>

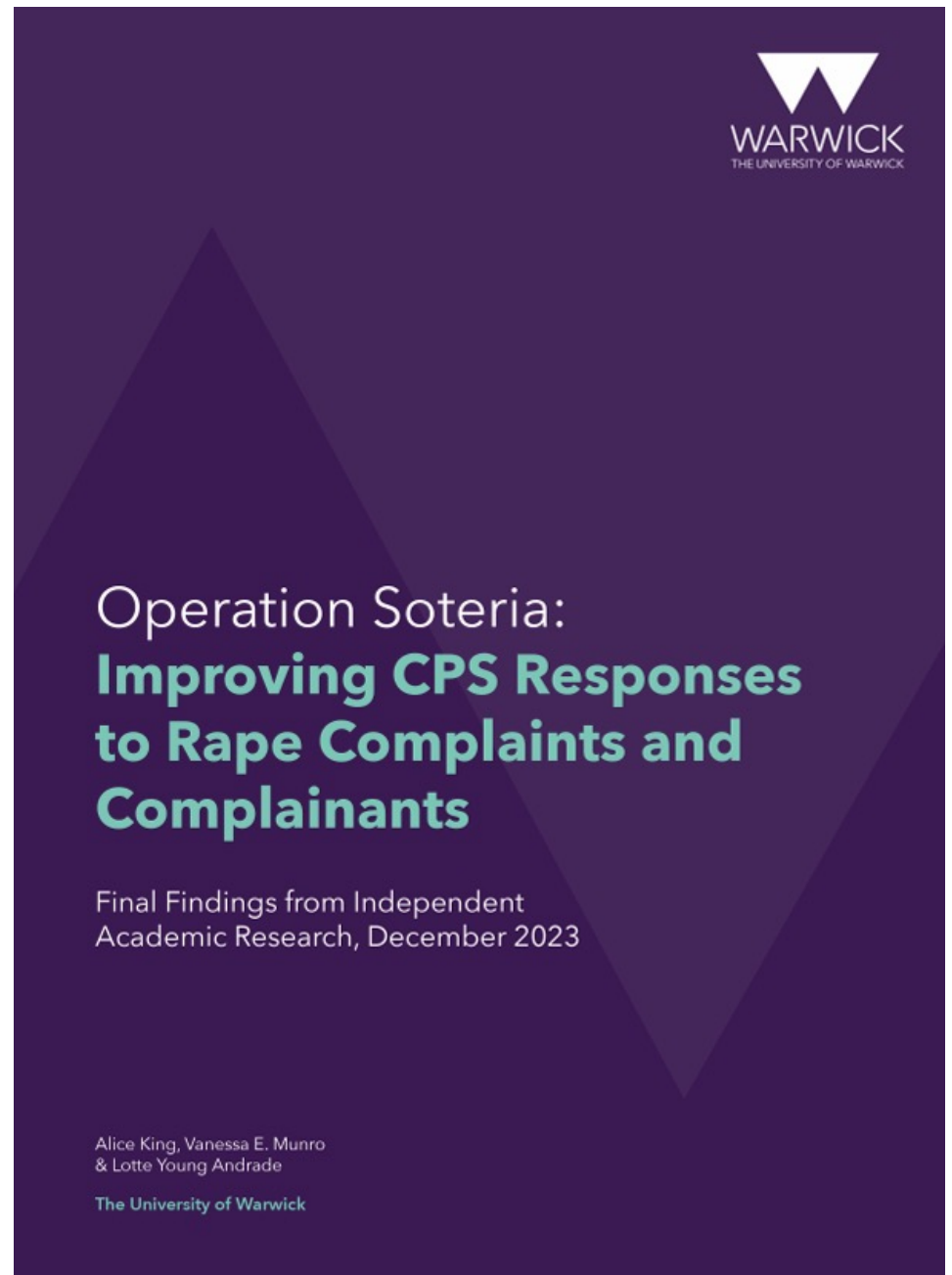
Academic-police collaboration

6 pillars

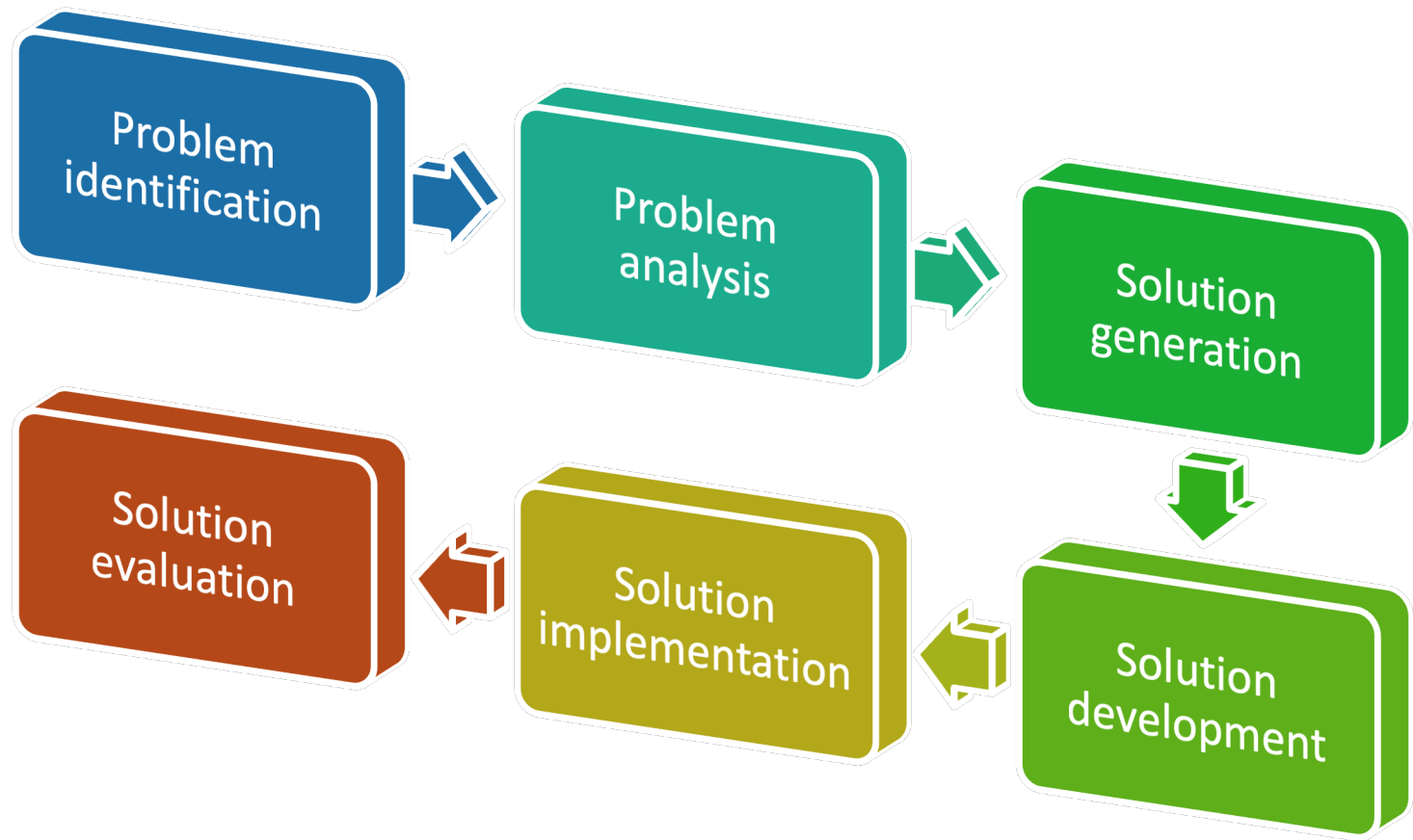
1. Suspect focused
2. Identify, disrupt & challenge repeat offenders
3. Systematic procedural justice to victim engagement
4. Police officer learning & development
5. Support above with data-led, performance savvy monitoring & evaluation
6. Digital evidence

Op Soteria

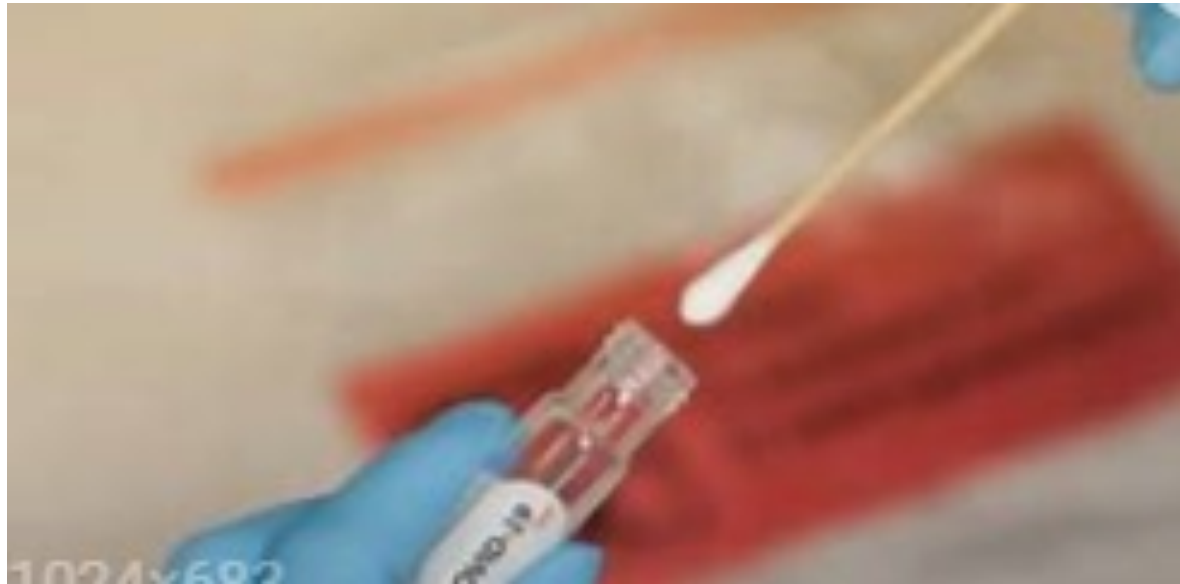
<https://archive.org/details/operation-soteria-full-report-2024/page/n7/mode/2up>



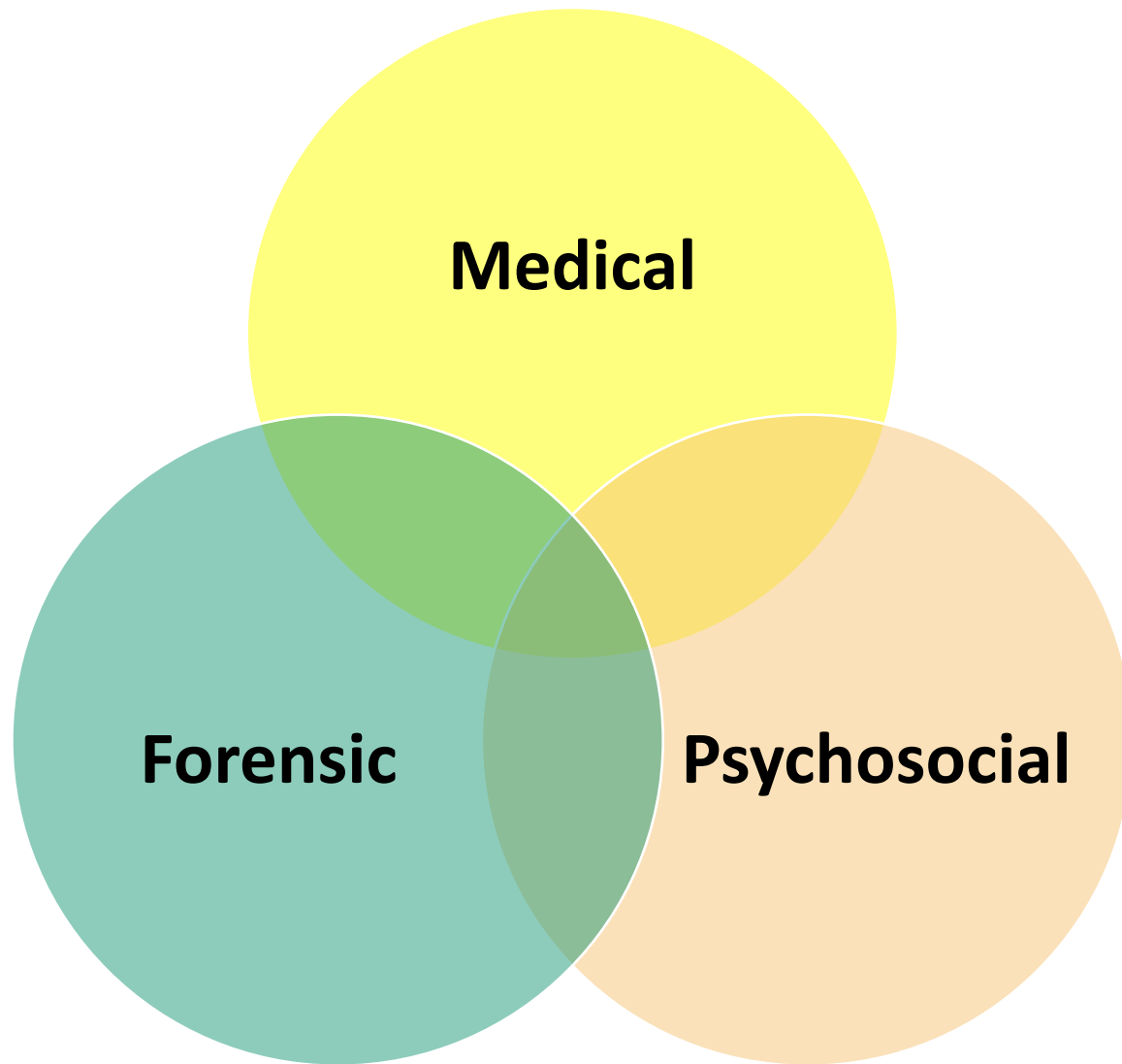
Problem solving process

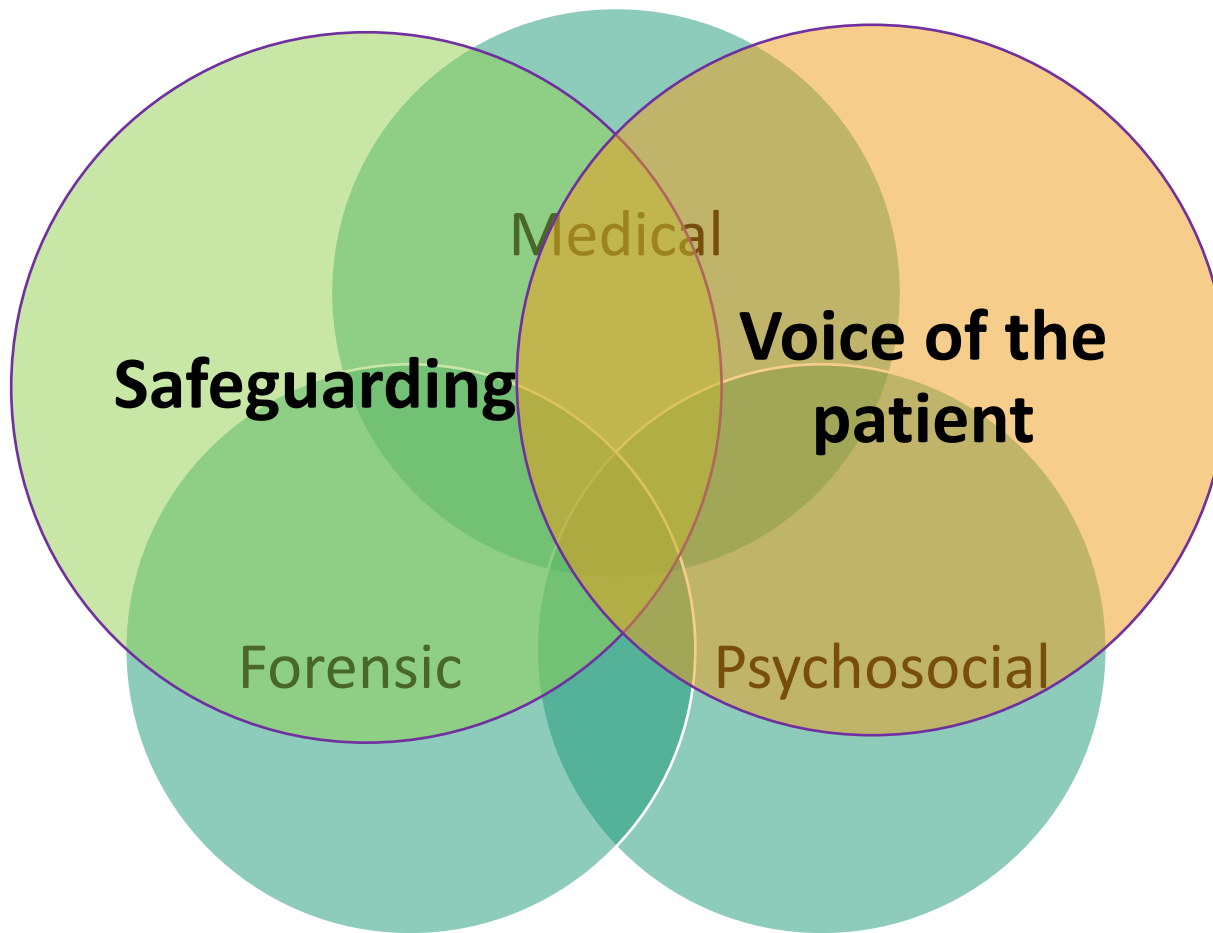


At-Home Testing for Survivors of Sexual Assault— Empowerment or Exploitation?



- Kadakia KT, Ross JS, Ramachandran R. At-Home Testing for Survivors of Sexual Assault—Empowerment or Exploitation? *JAMA Intern Med*. Published online August 12, 2024. doi:10.1001/jamainternmed.2024.2883





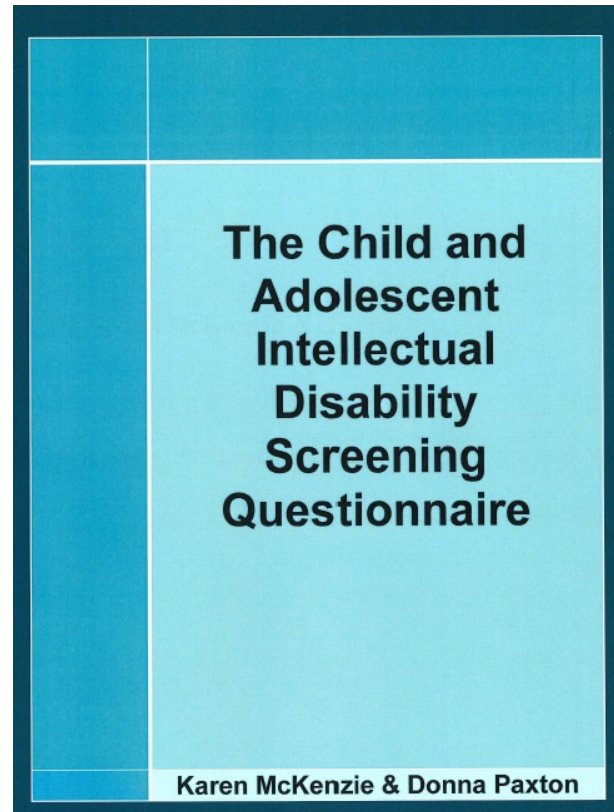
LDSQ

Learning Disability Screening Questionnaire

Manual

By Karen McKenzie & Donna Paxton

Published by GCM records 2006



8 Years +
Child & Adult
7 questions
Crisis worker
Aids capacity assessment



Post
- or after

Exposure
- is a situation where HIV has a chance to get into someone's bloodstream

Prophylaxis
- is a treatment to stop an infection happening

PEP
- is a treatment to stop a person becoming infected with HIV after it's got into their body



Professor Catherine White



St Mary's Centre



Sexual Assault Referral Centre





Faculty of Forensic & Legal Medicine

Quality Standards for Clinicians undertaking Paediatric Sexual Offence Medicine (PSOM)

Jun 2024 Review date Jun 2027 – check www.fflm.ac.uk for latest update

The medico-legal guidelines and recommendations published by the Faculty are for general information only. Appropriate specific advice should be sought from your medical defence organisation or professional association. The Faculty has one or more senior representatives of the Medical Defence Organisations (MDOs) on its Board, but for the avoidance of doubt, endorsement of the medico-legal guidelines or recommendations published by the Faculty has not been sought from any of the medical defence organisations.

- Forensic medical examination
- Recruitment
- Initial training
- Workplace-based supervision
- Continuing professional development
- Service level standard

<https://fflm.ac.uk/resources/publications/quality-standards-for-clinicians-undertaking-paediatric-sexual-offence-medicine-psom/>

CSA Ano-genital examinations



Most examinations will be normal.

- No injury in first place
- Injury has resolved
- Normal does not mean that nothing happened.

The Physical Signs of Child Sexual Abuse

An evidence-based review
and guidance for best practice

May 2015

American Academy
of Pediatrics

Faculty of Forensic
and Legal Medicine

Royal College
of Physicians

RCPCH
Royal College of
Paediatrics and Child Health

The Purple Book

<https://childprotection.rcpch.ac.uk/resources/physical-signs-of-child-sexual-abuse/#page-section-2>

Where you get it: 'Purple book' access

- **Full text with images** is going to be available for free to RCPCH members who are named or designated doctors for safeguarding children and involved in the forensic medical examination of children for suspected CSA.
- **Text only** access will be available for free to all RCPCH members and members of FFLM, RCP, BAPS, AAP, RACP, NAPAC.
 - These groups will be able to subscribe to the image version.
- Other medical professionals can subscribe for text or image versions.
- Legal professionals can only subscribe to **text only**.



Evidence@rcpch.ac.uk

Adverse Childhood Experiences

The three types of ACEs include

ABUSE



Physical



Emotional



Sexual

NEGLECT



Physical



Emotional

HOUSEHOLD DYSFUNCTION



Mental Illness



Incarcerated Relative



Mother treated violently



Substance Abuse



Divorce



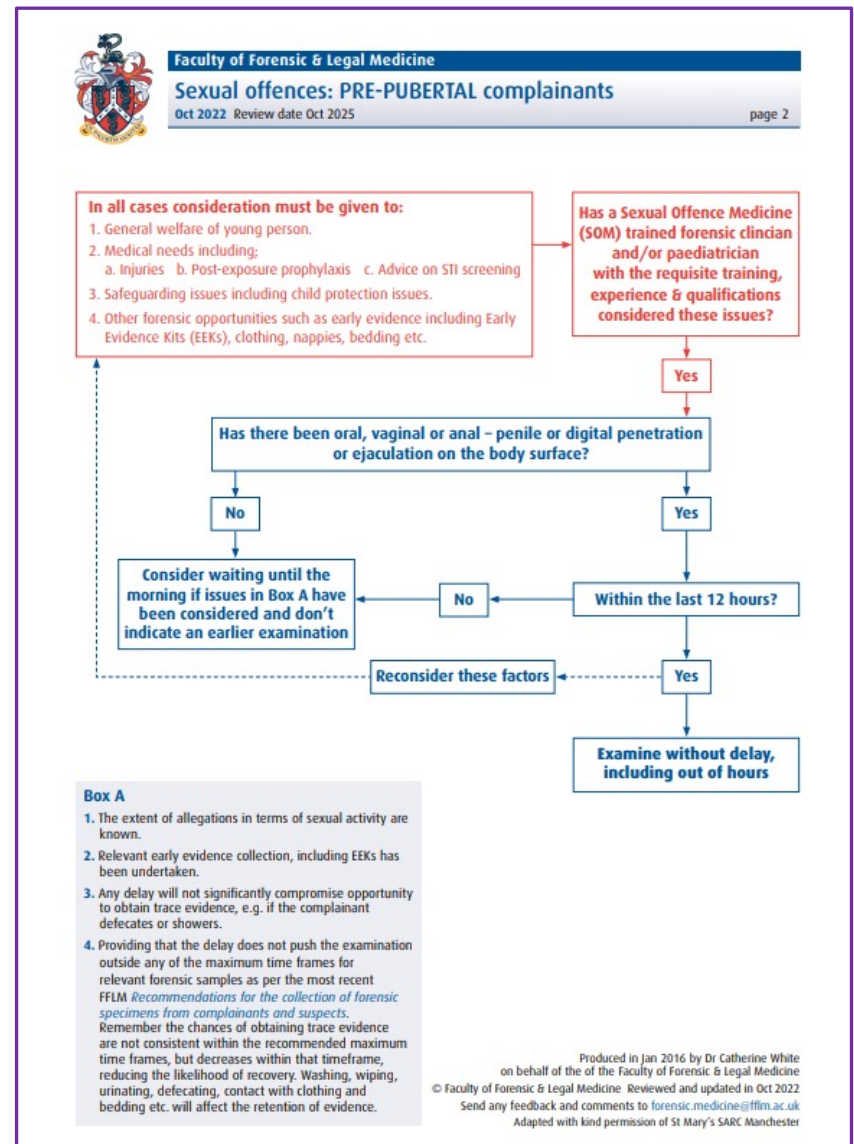
Felitti, M. D., Anda, R. F., Nordenberg, M. D. et al (1998) 'Relationship of childhood abuse and household dysfunction to many of the leading causes of death in adults: The Adverse Childhood Experiences (ACE) Study' *American Journal of Preventative Medicine*. 14.

<https://www.bing.com/videos/search?&q=the+adverse+childhood+experience+study&docid=603547405967169401&mid=8EEB605155EB93EE993A8EEB605155EB93EE993A&view=detail&FORM=VDRVRV&ajaxhist=0>

Urgency of forensic medical examinations

- Pre & post pubertal
- Holistic view

https://fflm.ac.uk/wp-content/uploads/2022/11/Pre-pubertalComplainants_RCPCH_Oct22.pdf



FFLM

Forensic sample guidelines

<https://fflm.ac.uk/resources/publications/recommendations-for-the-collection-of-forensic-specimens-from-complainants-and-suspects>



Cellmark Forensic Services College of Policing Key Forensic Services Ltd Eurofins Forensic Services National Police Chiefs' Council
Scottish Police Authority The UK Association of Forensic Nurses and Paramedics

Faculty of Forensic & Legal Medicine

Recommendations for the collection of forensic specimens from complainants and suspects

Jul 2024 Review date Jan 2025 - check www.fflm.ac.uk for latest update

The medico-legal guidelines and recommendations published by FFLM are for general information only. Appropriate specific advice should be sought from your medical defence organisation or professional association. FFLM has one or more senior persons from each of the three medical defence organisations on its Board, but for the avoidance of doubt, endorsement of the medico-legal guidelines or recommendations published by FFLM has not been sought from any of the medical defence organisations.

fflm.ac.uk

Professor Catherine White

FFLM

Forensic sample guidelines

<https://fflm.ac.uk/resources/publications/recommendations-for-the-collection-of-forensic-specimens-from-complainants-and-suspects>



The image shows the cover of a publication from the Faculty of Forensic & Legal Medicine (FFLM). The cover features the FFLM crest on the left, which includes a shield with a caduceus and a banner that reads 'et INCERTIS DEBET'. The title 'Recommendations for the collection of forensic specimens from complainants and suspects' is prominently displayed in blue and red text. Below the title, it states 'Jul 2024 Review date Jan 2025 - check www.fflm.ac.uk for latest update'. At the bottom, a disclaimer reads: 'The medico-legal guidelines and recommendations published by FFLM are for general information only. Appropriate specific advice should be sought from your medical defence organisation or professional association. FFLM has one or more senior persons from each of the three medical defence organisations on its Board, but for the avoidance of doubt, endorsement of the medico-legal guidelines or recommendations published by FFLM has not been sought from any of the medical defence organisations.' The cover also lists several partner organizations at the top: Cellmark Forensic Services, College of Policing, Key Forensic Services Ltd, Eurofins Forensic Services, National Police Chiefs' Council, Scottish Police Authority, and The UK Association of Forensic Nurses and Paramedics.

Cellmark Forensic Services College of Policing Key Forensic Services Ltd Eurofins Forensic Services National Police Chiefs' Council
Scottish Police Authority The UK Association of Forensic Nurses and Paramedics

Faculty of Forensic & Legal Medicine

Recommendations for the collection of forensic specimens from complainants and suspects

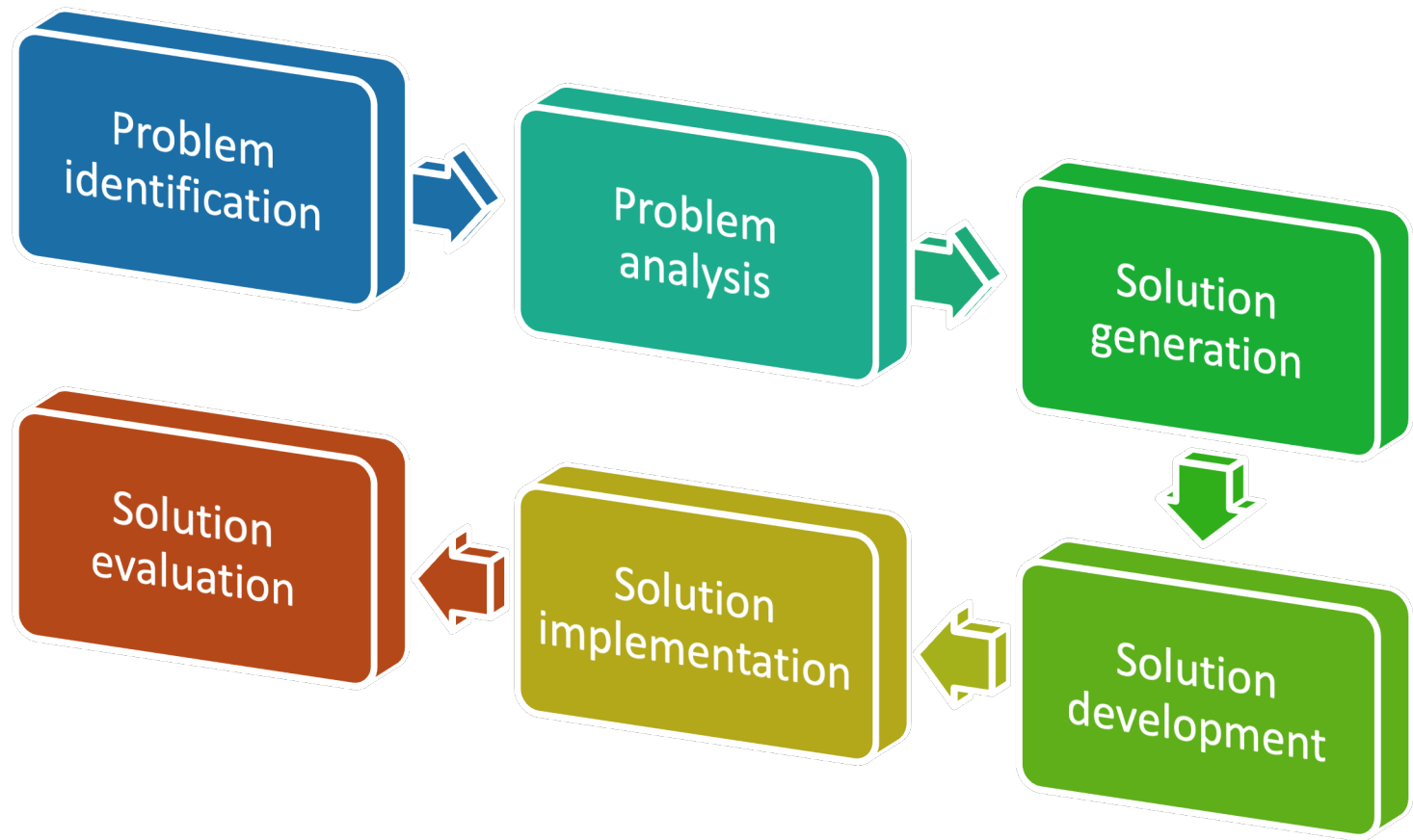
Jul 2024 Review date Jan 2025 - check www.fflm.ac.uk for latest update

The medico-legal guidelines and recommendations published by FFLM are for general information only. Appropriate specific advice should be sought from your medical defence organisation or professional association. FFLM has one or more senior persons from each of the three medical defence organisations on its Board, but for the avoidance of doubt, endorsement of the medico-legal guidelines or recommendations published by FFLM has not been sought from any of the medical defence organisations.

fflm.ac.uk

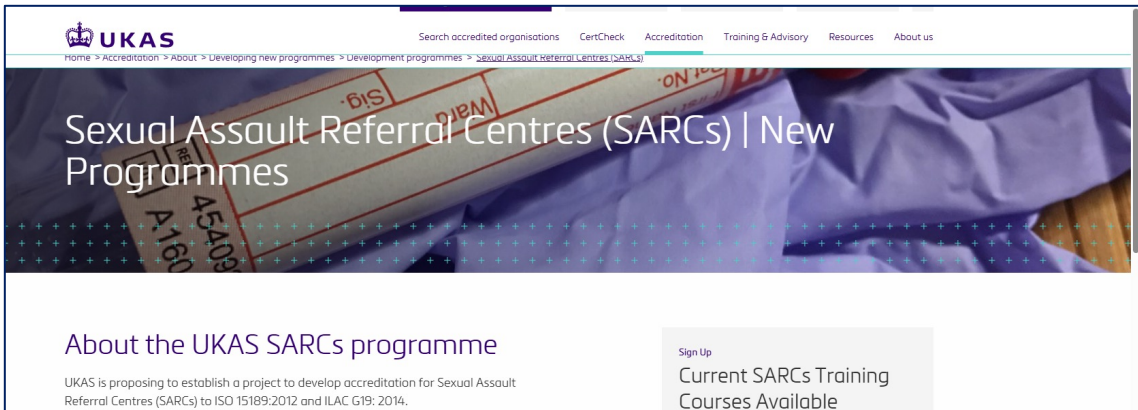
Professor Catherine White

Problem solving process



Evaluation?

Are we making a positive difference?



The screenshot shows the UKAS website header with navigation links: Search accredited organisations, CertCheck, Accreditation, Training & Advisory, Resources, and About us. The breadcrumb trail reads: Home > Accreditation > About > Developing new programmes > Development programmes > Sexual Assault Referral Centres (SARCs). The main heading is "Sexual Assault Referral Centres (SARCs) | New Programmes". Below this, there is a section titled "About the UKAS SARCs programme" with the text: "UKAS is proposing to establish a project to develop accreditation for Sexual Assault Referral Centres (SARCs) to ISO 15189:2012 and ILAC G19: 2014." To the right of this text is a button labeled "Sign Up" and a link "Current SARCs Training Courses Available". The background of the page features a close-up of a purple forensic kit with labels like "Sig", "Ward", and "ON".





Scrutiny panel

- False belief that there should always be injuries
- Lack of medical assessment
 - Injuries
 - Signs and symptoms
- Victims not given information about NFS
- “One word against another”



Leadership

**I can do things
you cannot, you
can do things I
cannot; together
we can do great
things.**

—Mother Teresa
Saint of Calcutta



THANKYOU

Contact@ifas.org.uk

www.ifas.org.uk

www.stmaryscentre.org

www.fflm.ac.uk

www.rcpch.ac.uk

@catherinewhite7

@InstituteFAS

@StmarysSARC