

The good-practice of Saint-Denis: The role of the health sector in building multidisciplinary centers

Dr Ghada Hatem, France





- Violence against women affects all countries, all ages, all cultures, all social backgrounds
- Violence within the couple is more heavily punished = aggravating circumstance
- Home is one of the most dangerous places for women and children

Major french investigations: ENVEEF, VIRAGE

(2000 et 2015)

- 223,000 women aged 18-75 are victims of physical and/or sexual violence by their former or current intimate partner
- Of these, 14% say they have filed a complaint
- A woman is raped every 7 minutes, she knows her attacker in 90% of cases, it is her partner in 37% of cases.
- A woman dies at the hands of her partner every 2.5 days
- Approximately 70,000 minors are affected by forced marriage in France
- 140 000 mutilated women live in France

Consequences of violence

PHYSICAL

PSYCHOLOGICAL

REPRODUCTIVE HEALTH

CHRONIC ILLNESS

SOCIAL

KIDS

Physical consequences

Injuries, burns,
fractures, cuts

Temporary or
permanent
disabilities

Death

Eating and
digestive
disorders

Autoimmune
diseases,
hypertension,
cancers, diabetes

Insomnia

Psychological consequences

PTSD, Relives, nightmares,
avoidances

Emotional disorders, anger, guilt,
shame

Reactive depression,
anxiety, insomnia

Abuse of psychoactive
substances: alcohol,
tobacco, drugs, medication

Suicidal thoughts, self-harming
behavior
(12 times more likely to attempt
suicide)

Risky behavior

Consequences on sexual and reproductive health

Gynecological pathologies, hemorrhages

Chronic pelvic pain

Vaginal and urinary infections, AIDS...

Unwanted pregnancies, unsafe abortions

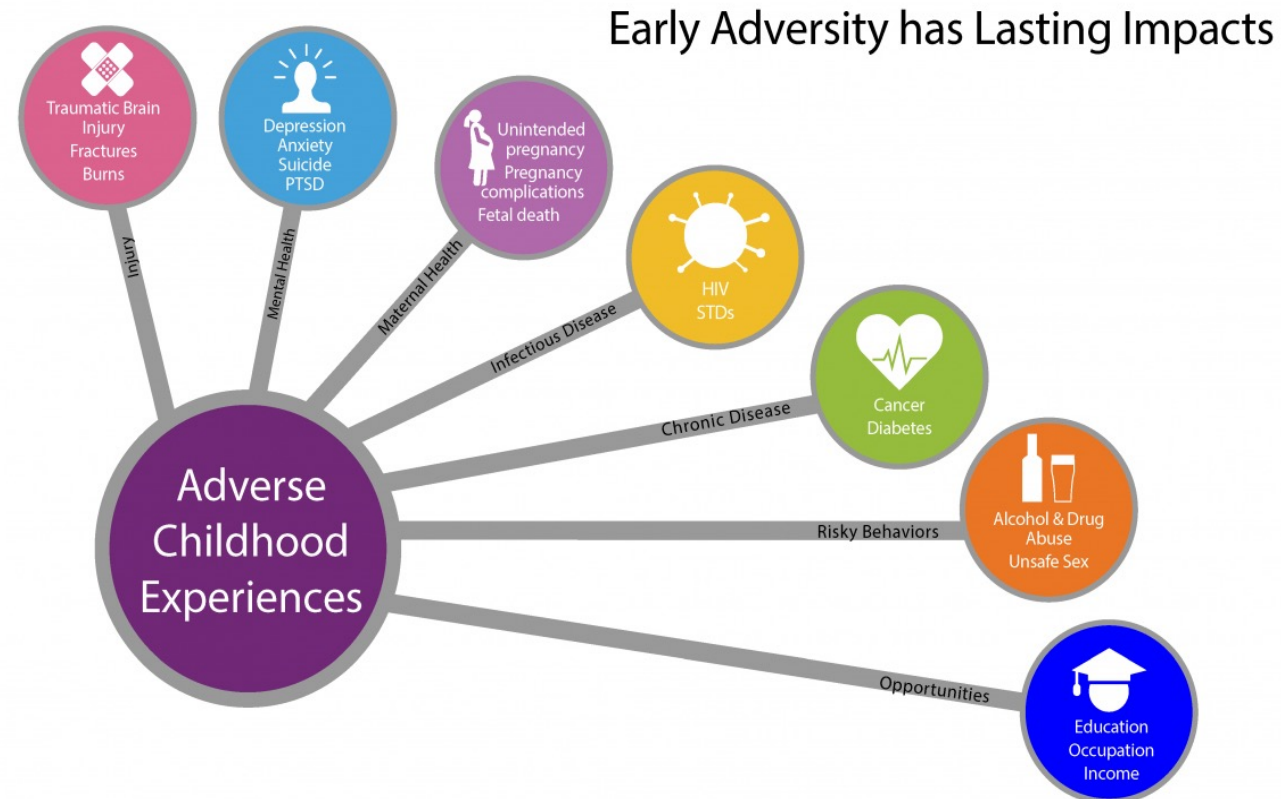
Complicated pregnancies, miscarriages, in utero death, stillbirths

Premature birth, low birth weight

Perinatal depression, anxiety

Impairment of parental abilities

ACE Study



V. Felitti, et al., “Relationship of Childhood Abuse and Household Dysfunction to Many of the Leading Causes of Death in Adults: The Adverse Childhood Experiences (ACE) Study,” American Journal of Preventive Medicine 14, no. 4 (1998)

Social consequences

Job loss

Impoverishment

Debt

Isolation

Useful skills needed

Somatic

Psychologic

Body work

Social

Legal

Judicial

Accommodation

Reinsertion

A proposed response, a Team/Management collaboration



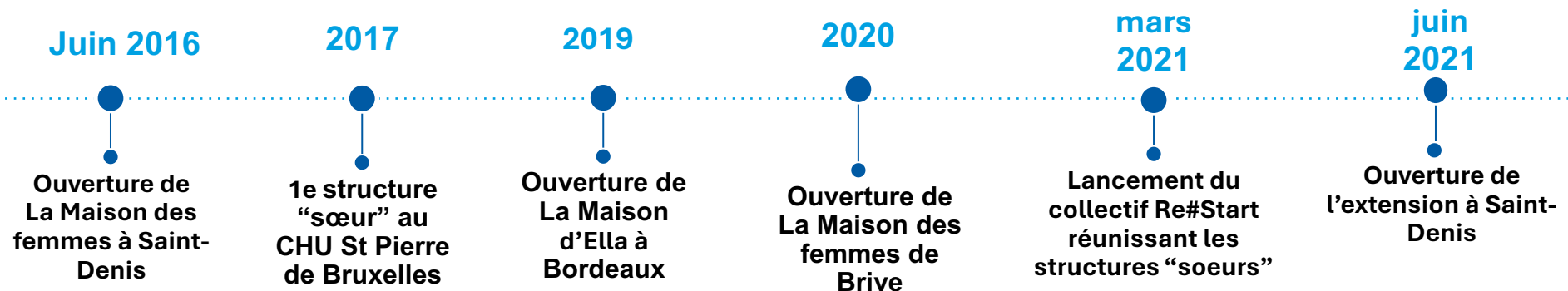
480m²
(post extension)

60 intervenants

**50-80 femmes accueillies
/ jour**

**4 500 femmes
suivies / an**

**14 000 consultations
/ an**



4 adapted care pathways

- Sexual health center
- Sexual mutilation care unit
- Violence management unit
- Emergency reception for victims of rape and sexual violence

A multi-professional team

- Doctors
- Surgeons
- Psychologists
- Sexologists
- Nurses
- Counselors
- Social workers
- Physiotherapists
- Secretaries
- Lawyers,
- Artists,
- Sportswomen...



Legal and administrative permanence, and return to work hotlines



Care of children:

- Consultations in pairs
- Mini-crèche



WORKSHOPS

LUNDI 10h -12h



RÉPARER L'INTIME

LUNDI 14h -16h



MUSIQUE

MARDI 10h -15h



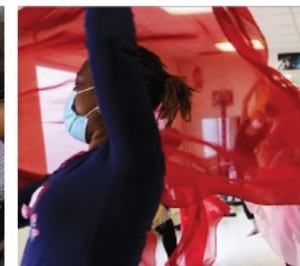
BEAUTÉ

1^{er} MARDI DU MOIS



« MUR A FLEURS »

MARDI 14h -16h



DANSE ORIENTALE

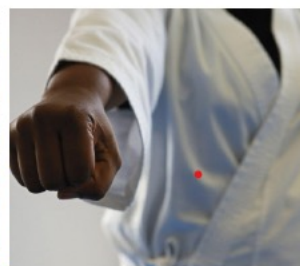
1 MERCREDI SUR 2 10h



PERCUSSIONS



JARDINAGE



KARATÉ



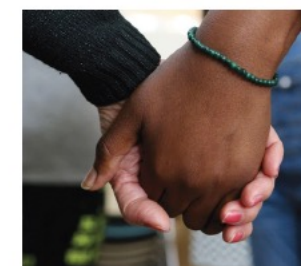
YOGA - THÉRAPIE



FRANÇAIS



YOGA



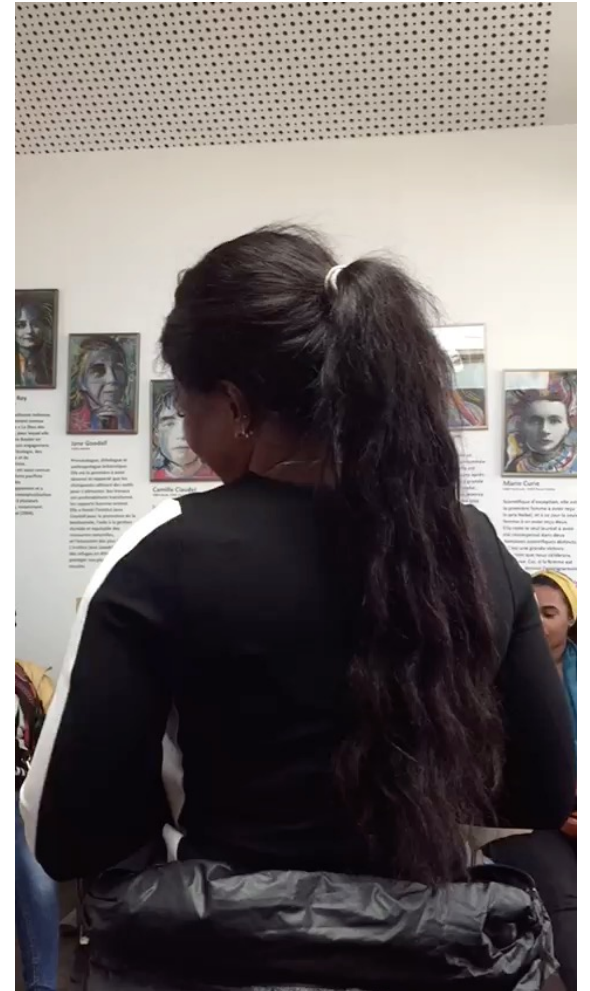
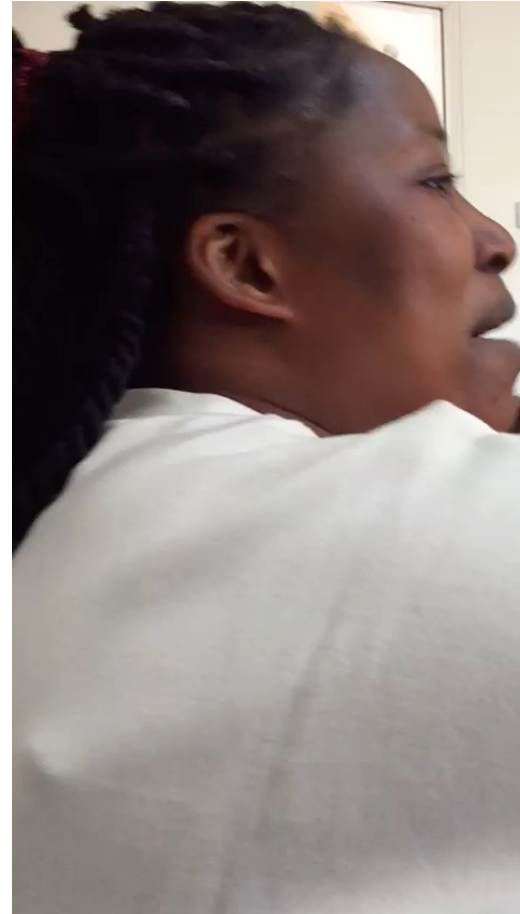
THÉÂTRE

WEEKLY POLICE DUTY

- By a police officer, trained in the reception of women victims of violence
- A specific training designed by the Territorial Centre for Internships and Training (CTSF) of Seine-Saint-Denis, the Maison des femmes and the Saint-Denis police station.



Focus groups

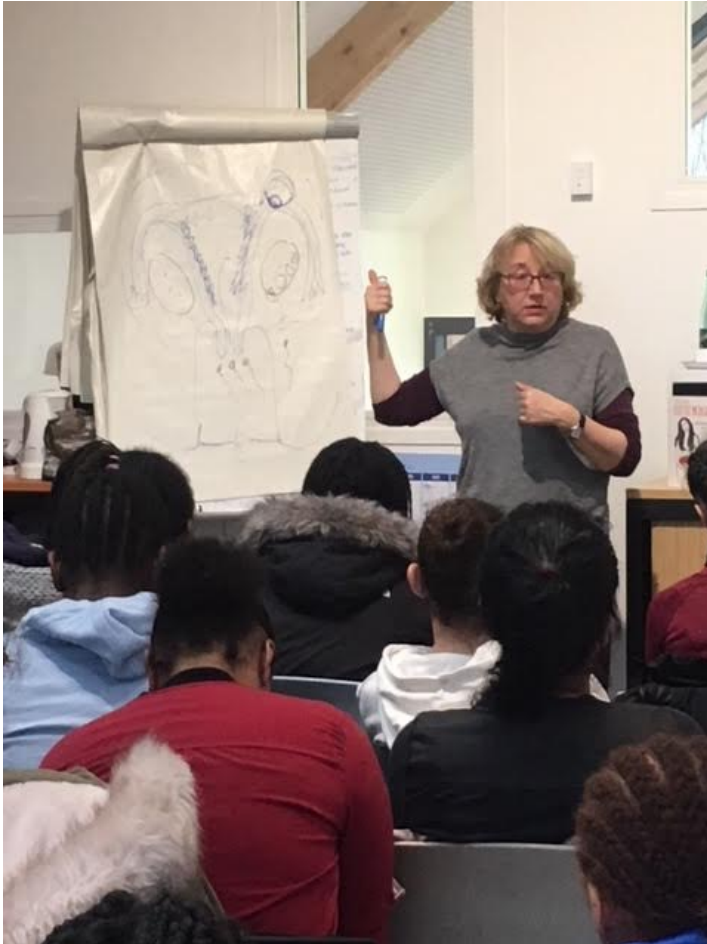




Psycho-corporal care: physiotherapists, psychomotricians, shiatsu



A place for training, prevention and education



**LA MAISON DES FEMMES
DE SAINT-DENIS**

CATALOGUE DE FORMATIONS

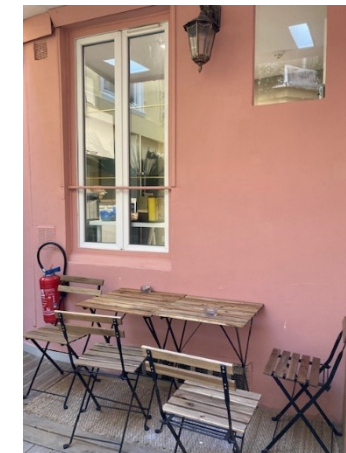
Accommodation « Mon Palier »



30 single or single rooms

Collective spaces : kitchen, living room dining room, library, TV room, laundry room, small courtyard ...

1 large room dedicated to the temporary reception of young women with children for major emergencies



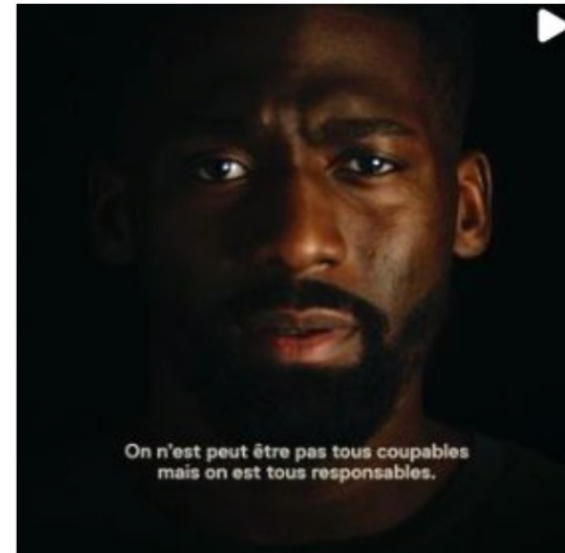
Creation and distribution of prevention tools: Podcasts, books, campaigns, moovies, trainings



Podcast



Tribunes



Campagnes de sensibilisation



A collaborative solution? The ReStart Network



THANK YOU

